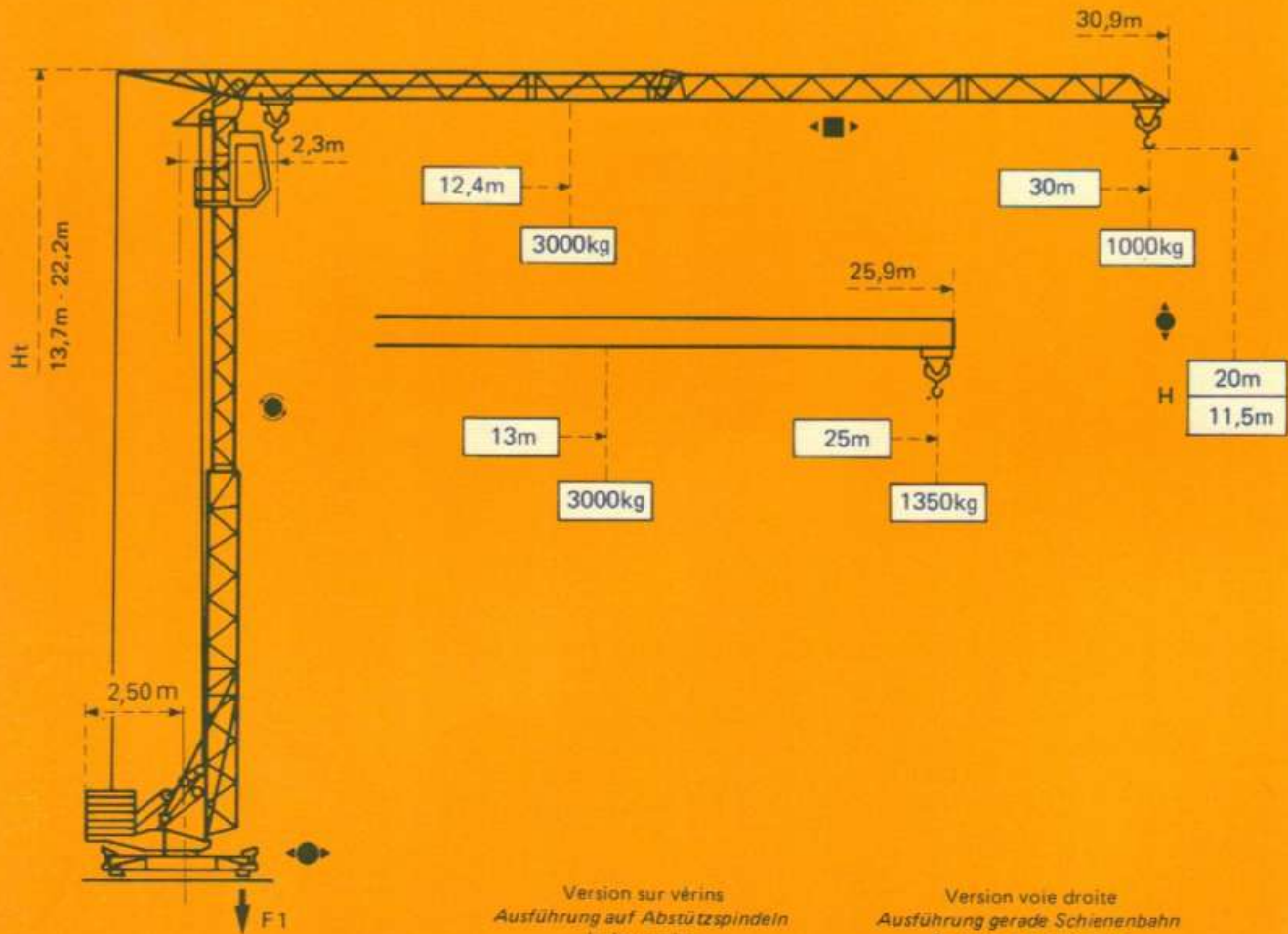


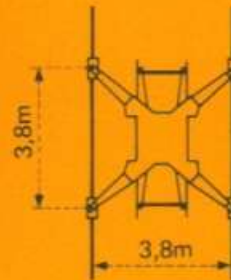
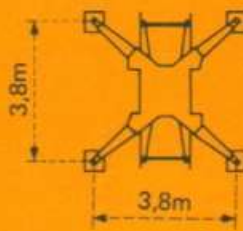
GMR 326 D

POTAIN 




Version sur vérins
Ausführung auf Abstützspindeln
Jacks version
Versión sobre gato


Version voie droite
Ausführung gerade Schienenbahn
Straight track version
Versión vía recta




F1 = Réactions *Eckdrücke* Reactions *Reacciones*

| | | |
|---|-------|-------|
| F1 | ● 17t | ■ 10t |
|  | 10,8t | |


- En service
- Hors service

 A vide sans lest ni train de transport, avec flèche et hauteur maximum.


- In Betrieb
- Ausser Betrieb

 Ohne Last, Ballast und Transportachse, mit Maximalausleger und Maximalhöhe.

- In service
- Out of service

 Without load, ballast or transport axles, with maximum jib and maximum height.

- En servicio
- Fuera de servicio

 Sin carga, sin lastre, ni tren de transporte, flecha y altura maximas.

Courbes de charges

Lastkurven

Load diagrams

Curvas de cargas



Flèche Ausleger Jib Flecha



2,3



| | | | | | | | | | | | |
|------|------|------|------|------|------|------|------|------|------|------|----|
| 12,4 | 13 | 14 | 16 | 18 | 20 | 22 | 24 | 26 | 28 | 30 | m |
| 3000 | 2820 | 2580 | 2190 | 1900 | 1670 | 1480 | 1330 | 1200 | 1090 | 1000 | kg |



2,3



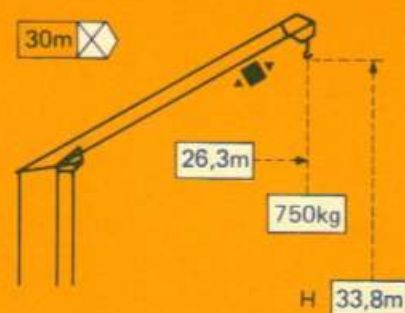
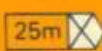
| | | | | | | | | |
|------|------|------|------|------|------|------|------|----|
| 13 | 14 | 16 | 18 | 20 | 22 | 24 | 25 | m |
| 3000 | 2740 | 2330 | 2020 | 1780 | 1580 | 1420 | 1350 | kg |

Flèche relevée

Ausleger in Steilstellung

Luffing jib

Flecha izada

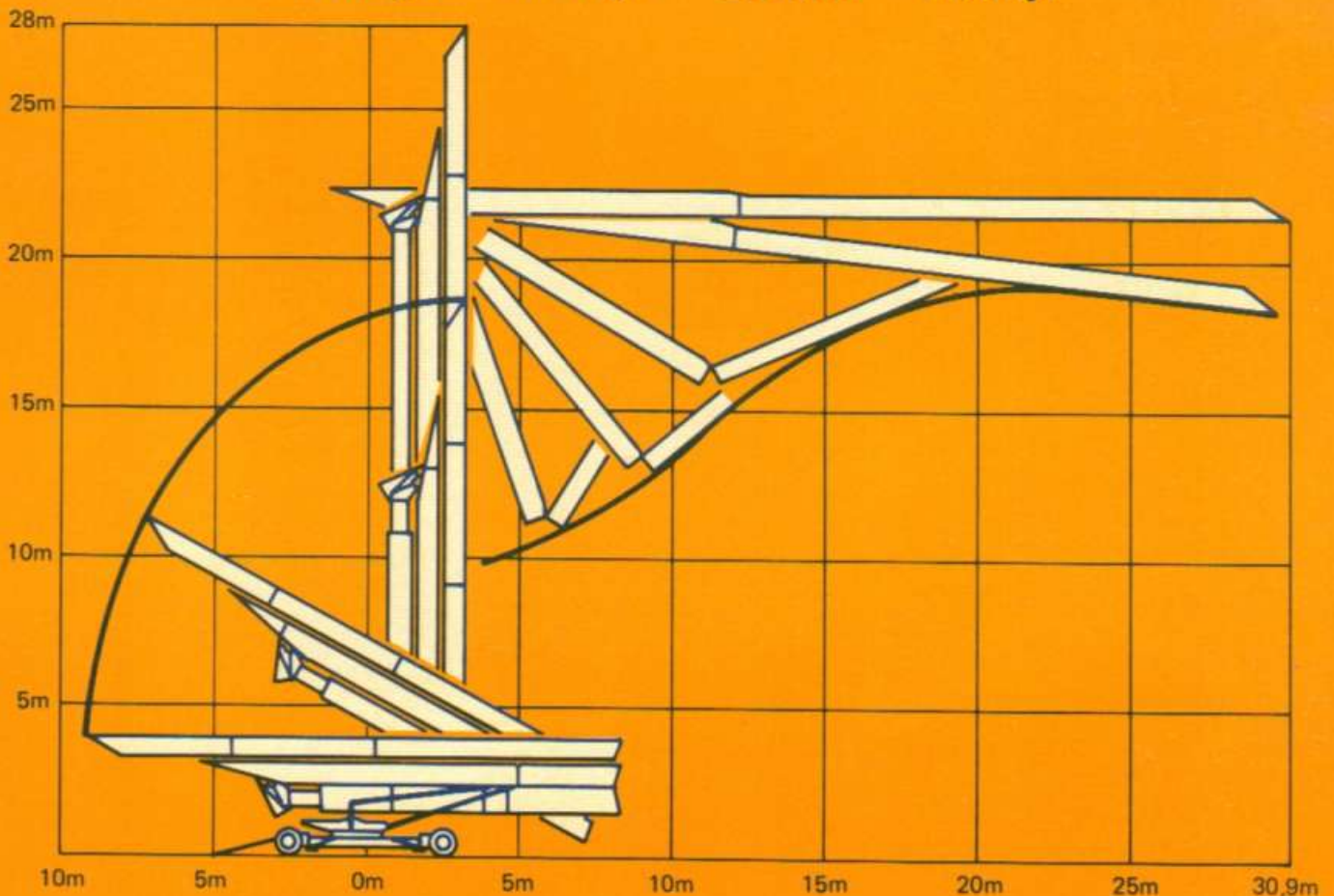


Montage

Montage

Erection

Montaje


















Mécanismes

Antriebe

Mechanisms

Mecanismos

| | | | | m/min | kg | ch-PS hp | kW |
|---|--|---|---|---|---------|--------------|-----|
| Levage Heben Hoisting Elevación | 15 TDPC 10  |  |  | 8 | 1500 | 5 | 3,7 |
| | | |  | 25 | 1500 | 15 | 11 |
| | | |  | 50 | 1000 | | |
| | |  |  | 4 | 3000 | 5 | 3,7 |
| | | |  | 12,5 | 3000 | 15 | 11 |
| | | |  | 25 | 2000 | | |
| Distribution - Katzfahren Trolleying - Distribución |  | 3D1 V5 | 35 |  | 4,5 | 3,3 | |
| | | 3D2 V5 | 22 - 44 | | 4,5 | 3,3 | |
| Orientation - Schwenken Slewing - Orientación |  | RCV 20 | 0 → 1 tr/min U/min-rpm |  | 3 | 2,2 | |
| Translation - Kranfahren Travelling - Traslación |  | TVD 121 | 25 |  | 2 x 1,4 | 2 x 1 | |
| Réseau - Netzstrom - Mains supply - Red | | | | | | 380V - 50 HZ | |
| Puissance électrique nécessaire - Anschlusswert - Necessary electric power - Potencia eléctrica necesaria | | | | | | 20 KVA | |
| Groupe électrogène - Stromaggregat - Generator set - Grupo electrogéno | | | | | | * | |

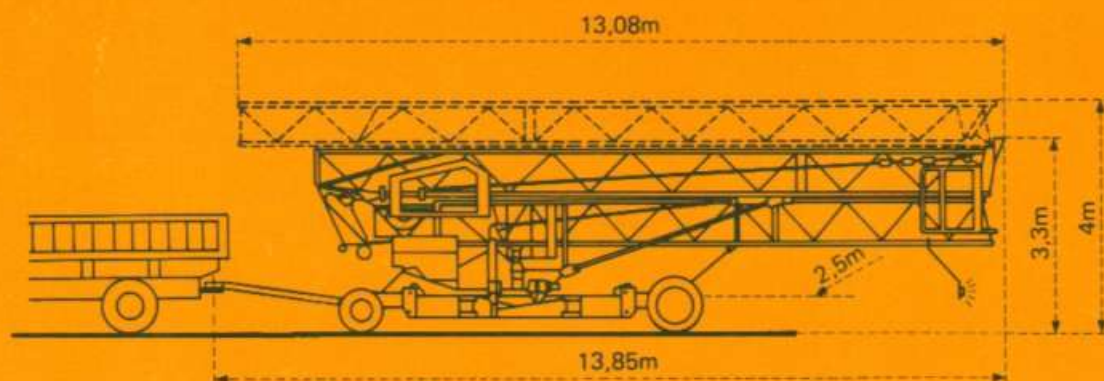
* Nous consulter - Auf Anfrage - Consult us - Consultarnos

Transport

Transport

Transport

Transporte



Version tractée derrière camion

Ausführung als LKW Anhänger

Lorry towed version

Versión remolcable detrás de un camión

Version semi-portée : Nous consulter
 Ausführung als Sattelaufleger : Auf Anfrage
 Tractor towed version : Consult us
 Versión en semi-remolque : Consultarnos

Conforme à la directive CEE 84/534 sur le niveau acoustique - Gemäss EWG-Richtlinie 84/534 über Schall Leistungspegel
 In compliance with the EEC 84/534 instruction on noise level - Conforme con la directiva CEE 84/534 sobre el nivel acústico

NF E 52081 - 82

DIN 15018 H1 B3

POTAIN 

18, rue de Charbonnières, B.P. 173-F 69132 ECULLY Cedex
 Tél. 72.20.20.20 - Télex 330 179 - Télex. Export 375 213 -
 Fax 72 20 20 00

POTAIN GmbH 6082 MÖRFELDEN WALLDORF
 Nordendstr. 79-87 - Postfach 420
 Tél. 06 105 704.0 - Télex 4.1857 45

GMR 326 D

Réf. 1988.44 KX1

Modifications réservées - Änderungen vorbehalten - Subject to modification - Modificaciones reservadas

Printed in France