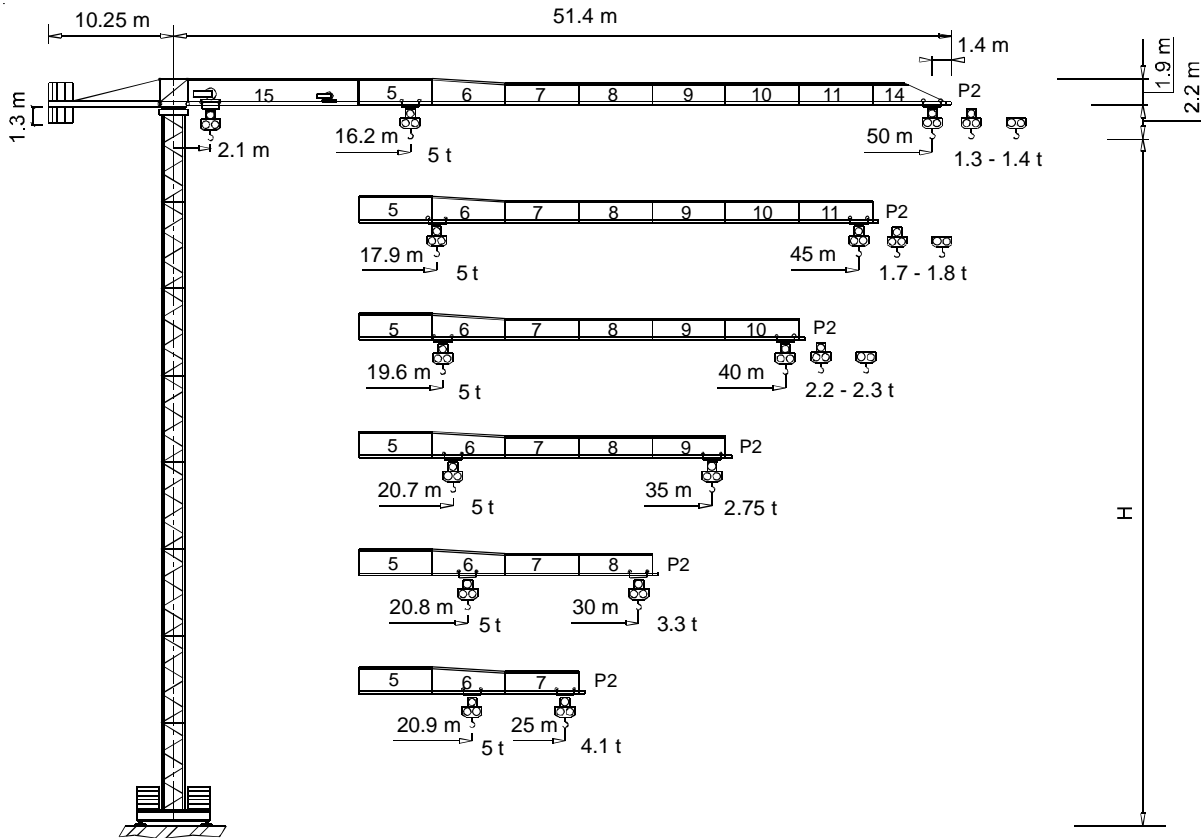




TEREX | COMEDIL

Gru a torre "Flat Top"

**"Flat Top" Tower Crane • Grue à tour "Flat Top"
"Flat Top" Turmdrehkran • Grúa torre "Flat Top"**



CE FEM 1.001 A3

Dati illustrativi non impegnativi
Con riserva di modifica senza preavviso

Specifications and data not binding
Subject to modification without notice

Données techniques seulement indicatives
Modifications réservées sans préavis

Angaben und Beschreibung unverbindlich
Änderungen vorbehalten ohne weitere Mitteilung

Dibujos y datos sin compromiso
Modificaciones reservadas sin preaviso

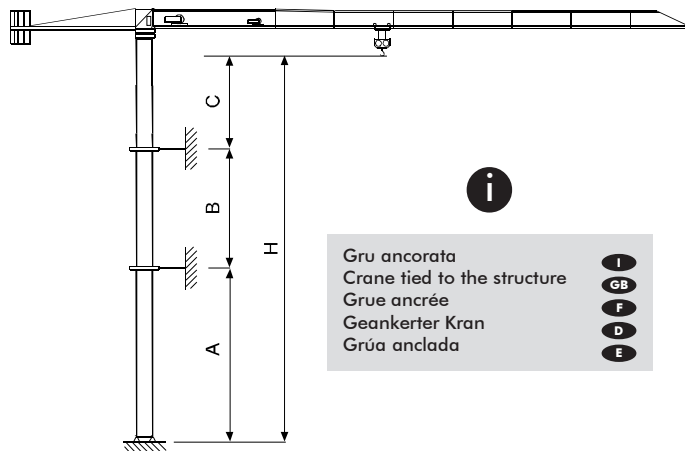
UTEDOC.REV.003-1

"CITY" CTT 91-5 TS12

Diagramma di portata I
 Courbes de charges F
 Curvas de cargas E
Load Diagram GB
 Lastkurven D

i 		CTT 91 -5											
		m	5	10	15	20	25	30	35	40	45	50	
2.5 t - 30.63 m	t	2.5	2.5	2.5	2.5	2.5	2.5	2.14	1.83	1.59	1.4		
2.5 t - 29.53 m	t	2.5	2.5	2.5	2.5	2.5	2.45	2.04	1.73	1.49	1.3		
5 t - 16.16 m	t	5	5	5	3.93	3.04	2.45	2.04	1.73	1.49	1.3		
2.5 t - 33.93 m	t	2.5	2.5	2.5	2.5	2.5	2.5	2.41	2.07	1.8			
2.5 t - 32.74 m	t	2.5	2.5	2.5	2.5	2.5	2.5	2.31	1.97	1.7			
5 t - 17.88 m	t	5	5	5	4.41	3.42	2.77	2.31	1.97	1.7			
2.5 t - 37.19 m	t	2.5	2.5	2.5	2.5	2.5	2.5	2.5	2.3				
2.5 t - 35.92 m	t	2.5	2.5	2.5	2.5	2.5	2.5	2.5	2.2				
5 t - 19.58 m	t	5	5	5	4.88	3.8	3.08	2.58	2.2				
2.5 t - 35 m	t	2.5	2.5	2.5	2.5	2.5	2.5	2.5					
5 t - 20.68 m	t	5	5	5	5	4.04	3.29	2.75					
2.5 t - 30 m	t	2.5	2.5	2.5	2.5	2.5	2.5						
5 t - 20.76 m	t	5	5	5	5	4.06	3.3						
2.5 t - 25 m	t	2.5	2.5	2.5	2.5	2.5							
5 t - 20.94 m	t	5	5	5	5	4.1							

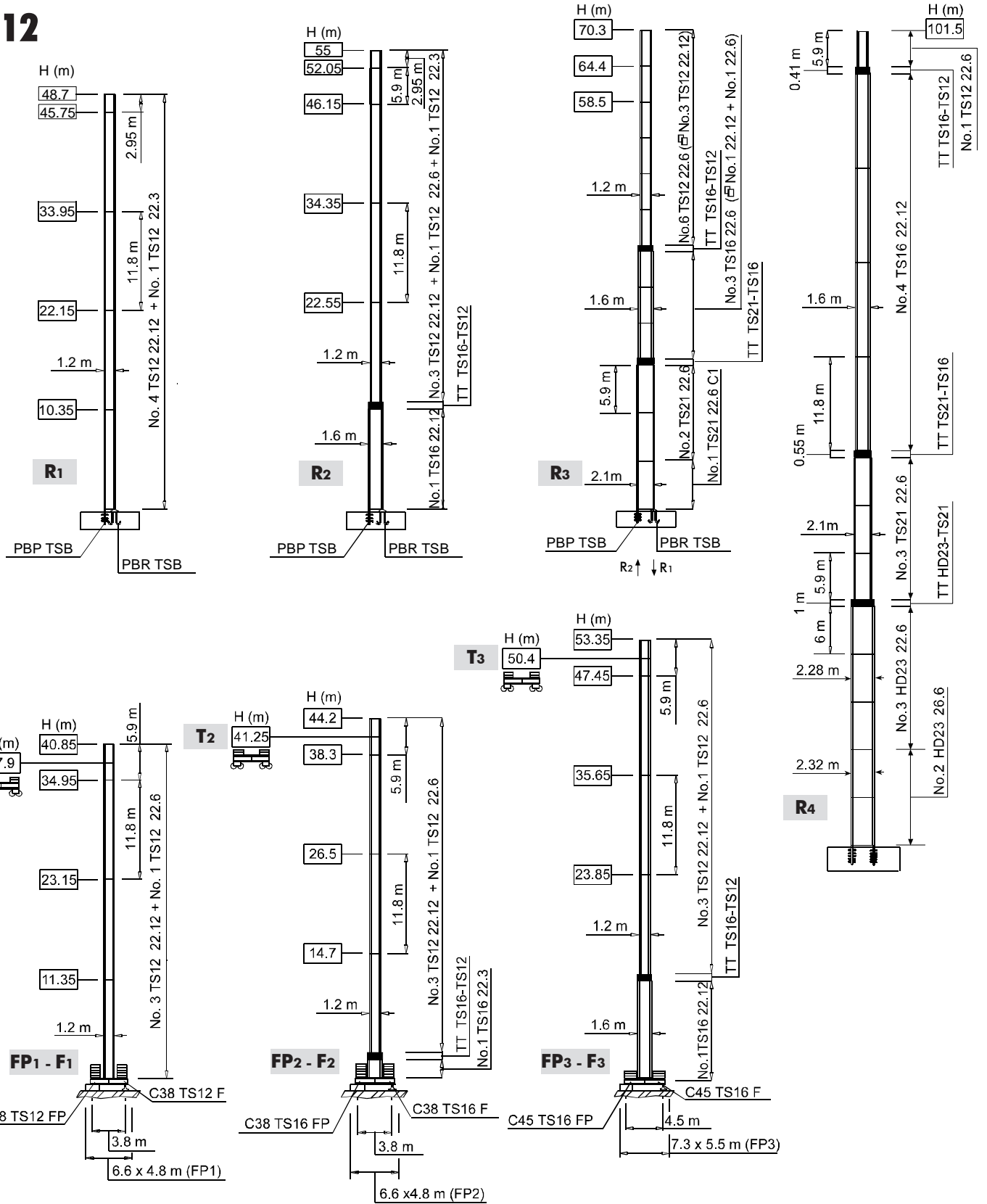
Altre installazioni I
 Autres implantations F
 Otras implantaciones E
Other configurations GB
 Aufstellmöglichkeiten D



Torre **I** Tower **GB** Tour **F** Turm **D** Torre **E**

- I** Le prolunghe TS sono disponibili in lunghezze 11.8 m, 5.9 m, 2.95 m.
- F** Les éléments de mât TS sont disponibles en longueur 11.8 m, 5.9 m, 2.95 m.
- E** Los tramos de torre TS son disponibles en las medidas de largo 11.8 m, 5.9 m, 2.95 m.
- GB** The available lengths for the TS tower sections are 11.8 m, 5.9 m, 2.95 m.
- D** Die Turmschüsse TS sind mit Längen 11.8 m, 5.9 m, 2.95 m verfügbar.

TS12



	11 APC 25	31 * kVA	400 V - 50 Hz
	15 AFC 25	40 * kVA	400 V - 50 Hz / 460 V - 60 Hz
	18 AFC 25	41 * kVA	
			2000/14/CE

* Gru senza traslazione / Crane without travelling equipment / Grue sans translation / Krane ohne Schienenfahren / Grúa sin traslación

		m/min	t	kW					
11 APC 25		6	2.5	11	186 m				
		20	2.5						
		40	1.25						
		3	5						
		10	5						
		20	2.5						
15 AFC 25 (VARIANT)		0 ⇌ 1.7	2.5	15	186 m				
		1.7 ⇌ 6	2.5						
		6 ⇌ 28	2.5						
		28 ⇌ 46	1.44						
		46 ⇌ 57	1.1						
		0 ⇌ 0.85	5						
		0.85 ⇌ 3	5						
		3 ⇌ 14	5						
		14 ⇌ 23	2.88						
		23 ⇌ 28.5	2.2						
		18 AFC 25 (VARIANT)				0 ⇌ 2.2	2.5	18	310 m
						2.2 ⇌ 8	2.5		
8 ⇌ 34	2.5								
34 ⇌ 55	1.46								
55 ⇌ 69	1.1								
	0 ⇌ 1.1		5						
	1.1 ⇌ 4		5						
	4 ⇌ 17		5						
	17 ⇌ 27.5		2.92						
	27.5 ⇌ 34.5		2.2						

	DAD 2 2 D1	0 - 22 - 44 m/min	2.2 - 1.5 kW
	DVF 3 4 D5 (VARIANT)	0 ⇌ 6 ⇌ 30 ⇌ 60 m/min	4 kW
	SSR 1 1 65	0.76 r.p.m.	1 x 65 Nm
	▲ TAD 1RP 2M3	0 - 24 m/min	2 x 3 kW
	● TAD 2RP 2M3		

	▲	●
	Max. H [m]	
T ₁	37.9	-
T ₂	41.25	-
T ₃	-	50.4

	Sollevamento I	Hoisting	GB Levage	F Heben	D Elevación	E
	Traslazione carrello	Trolleying	GB Distribution	F Katzfahren	D Distribución	
	Rotazione	Slewing	GB Orientation	F Schwenken	D Orientación	
	Traslazione	Travelling	GB Translation	F Schienenfahren	D Traslación	
	Direttiva sul livello acustico	Directive on noise level	GB Directive sur le niveau acoustique	F Richtlinie für den Schall-Leistungspegel	D Directiva sobre el nivel acustico	
	Consultateci	Consult us	GB Nous consulter	F Auf Anfrage	D Consultarnos	
	Potenza totale richiesta	Power requirements	GB Puissance totale nécessaire	F Geforderte Stromstärke	D Potencia necesaria	
	Alimentazione	Power supply	GB Alimentation	F Stromversorgung	D Alimentación	

Gru Comedil s.r.l.

A Terex Company



Via S. Egidio 42/A, 33074 Fontanafredda (PN) - Italy
Tel. (+39) 0434 567 311 - Telefax (+39) 0434 998631

Internet e-mail: info@comedil.com
Internet home page: www.comedil.com

Divisione Automontanti

Via Alessandrina, 25 - 20095 Cusano Milanino (MI) - Italy
Tel. (+39) 02 613 16011 - Telefax (+39) 02 613 16034

Internet e-mail: info.CBR@comedil.com