

DIAGRAMMA DI CARICO con braccio ripiegato

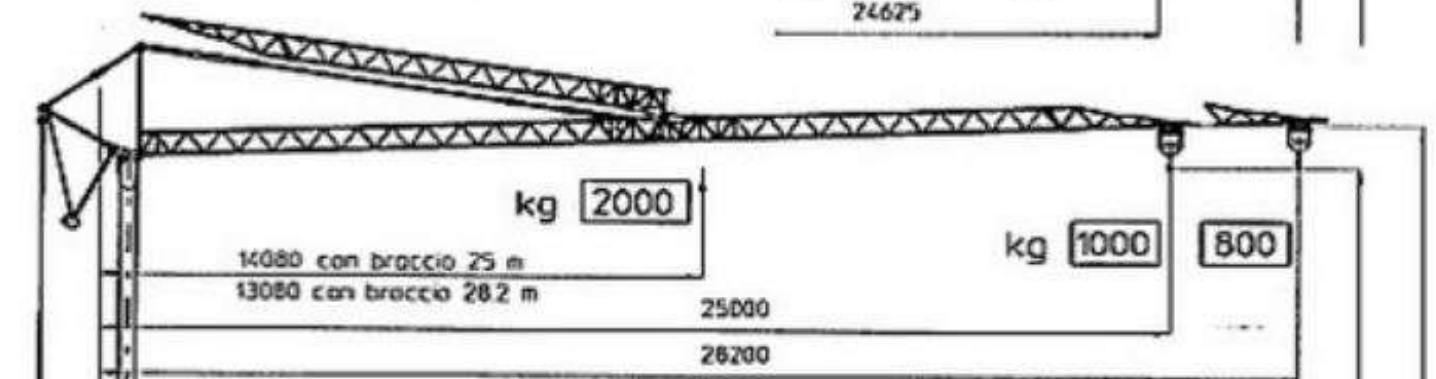
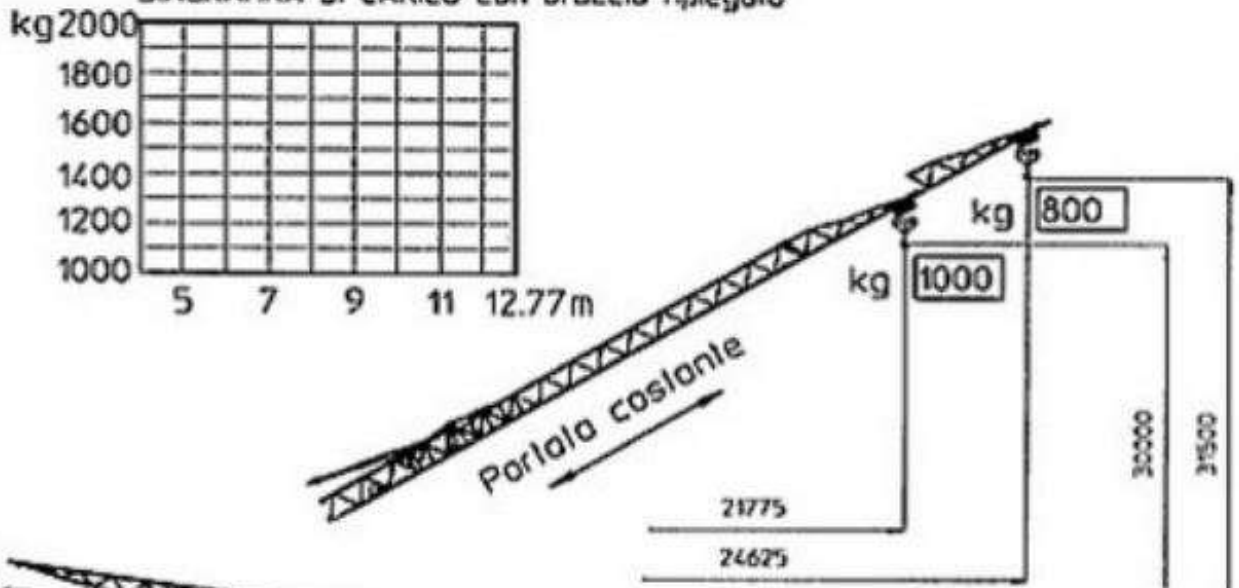


DIAGRAMMA DI CARICO

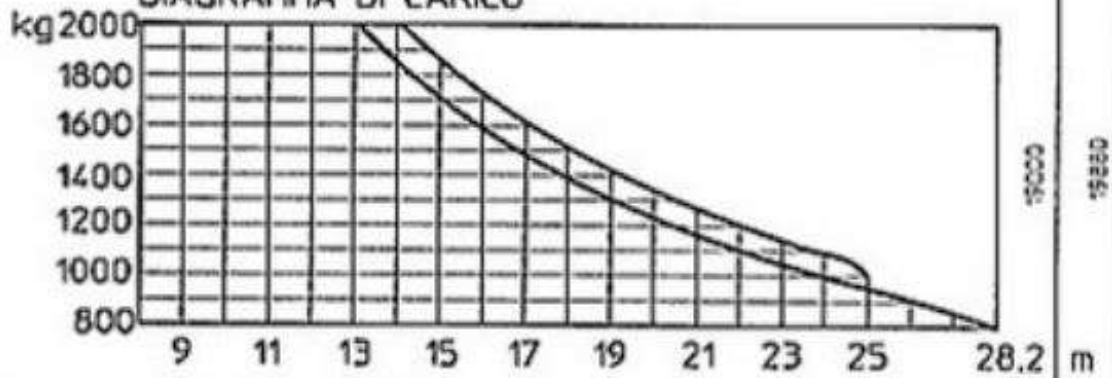
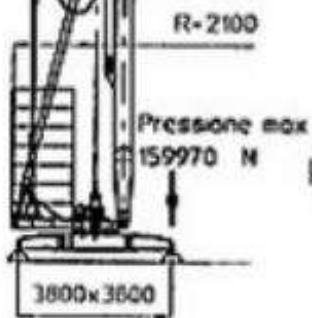
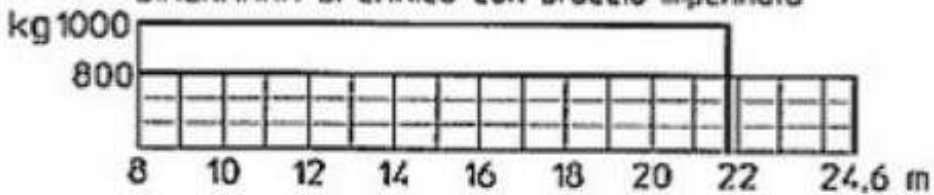
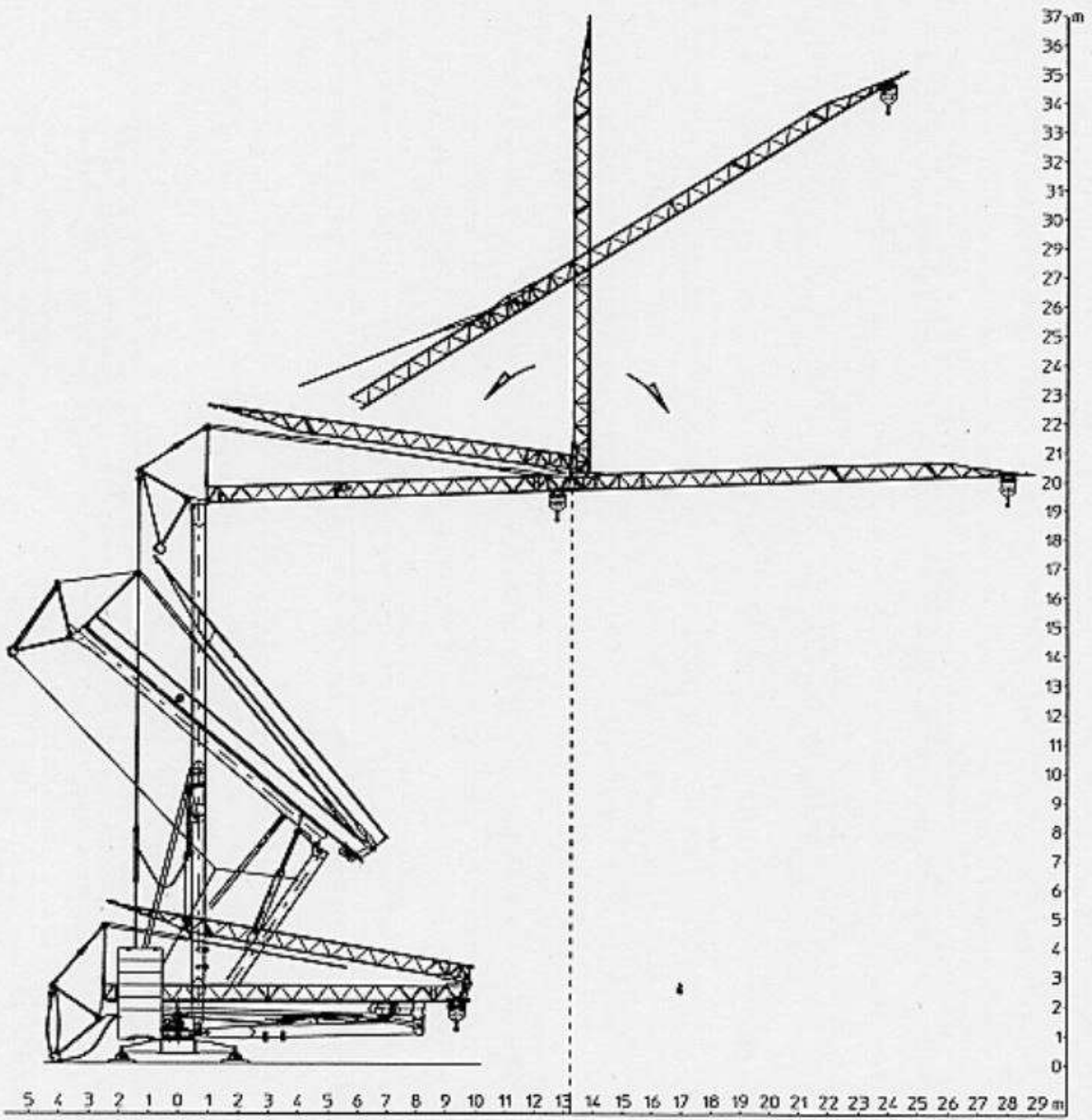
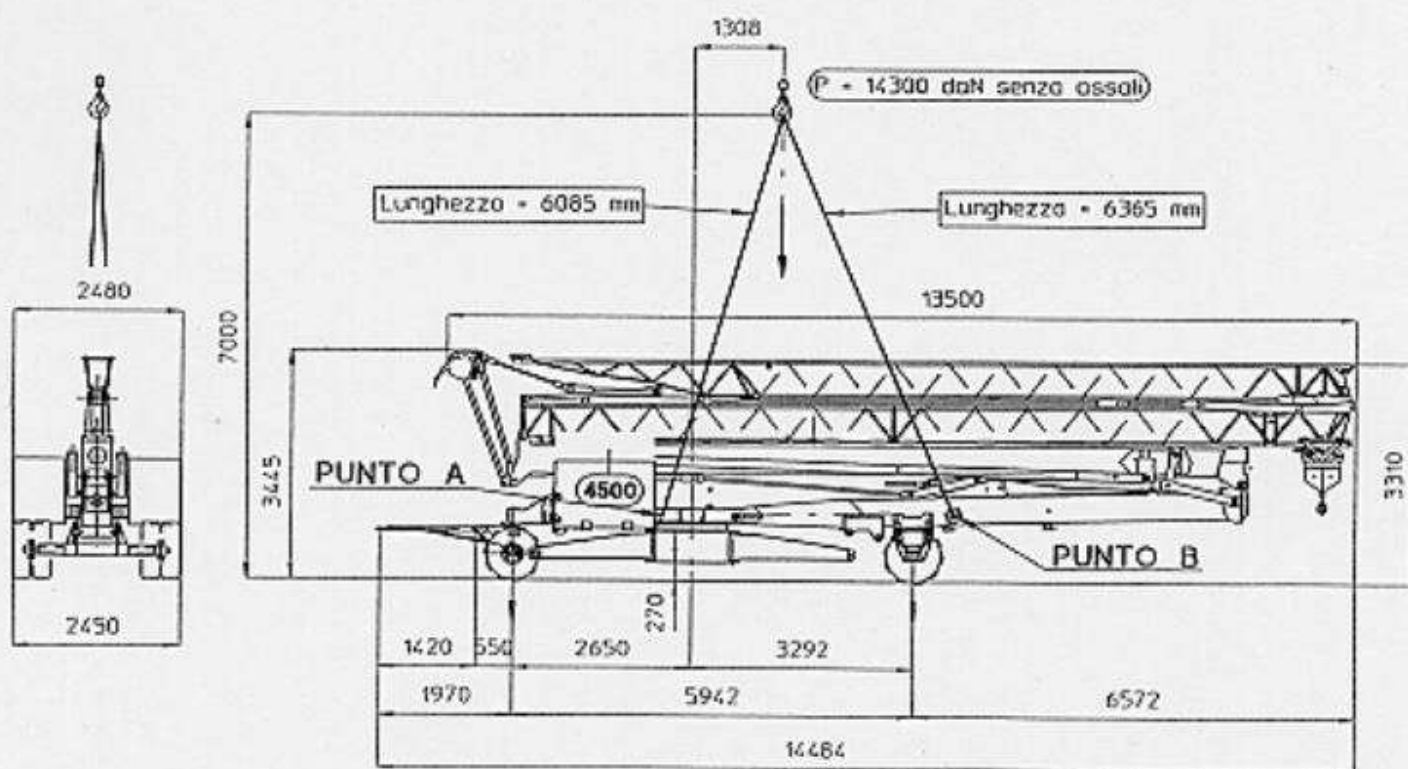


DIAGRAMMA DI CARICO con braccio impennato





### GRU 185.8A CON CARRO NORMALE



**Durante il sollevamento della gru :**

- il carico agente su di un tratto di fune sul punto A è pari a 4600 daN ( n° 2 tratti )
- il carico agente su di un tratto di fune sul punto B è pari a 3300 daN ( n° 2 tratti )



50 Hz

V +10  
-10%



400 V - 20 kVA



m/1'

4,5

18

36

kg

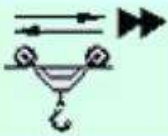
2000

2000

800

kW

8 / 6,6 / 1,6



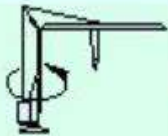
m/1'

16

32

kW

1,5 / 0,7



giri/1'

0,45

0,9

kW

1,5 con Inverter



min

15

kW

3



massa gru Kg 11000 + zavorra a lastre Kg 14000